

The Unequal Impact of COVID-19:
Equity During a Pandemic
Sponsored by Racial Justice Initiative and
Immigration Justice
Thursday, April 30, 2020
7:00 PM – 8:15 PM

Monica Valdes Lupi, JD, MPH
Senior Fellow - de Beaumont Foundation
Advisor – CDC Foundation

My Public Health Journey



“Hot” topics

ROUTE FIFTY
Connecting state and local government leaders

MANAGEMENT INFRASTRUCTURE TECH & DATA SMART CITIES PUBLIC SAFETY HEALTH & HUMAN SERVICES

Black Americans Face Higher Rates of Coronavirus Infection



Disparities Policy

Home // Disparities Policy // Communities of Color at Higher Risk for Health and Economic Challenges due to COVID-19

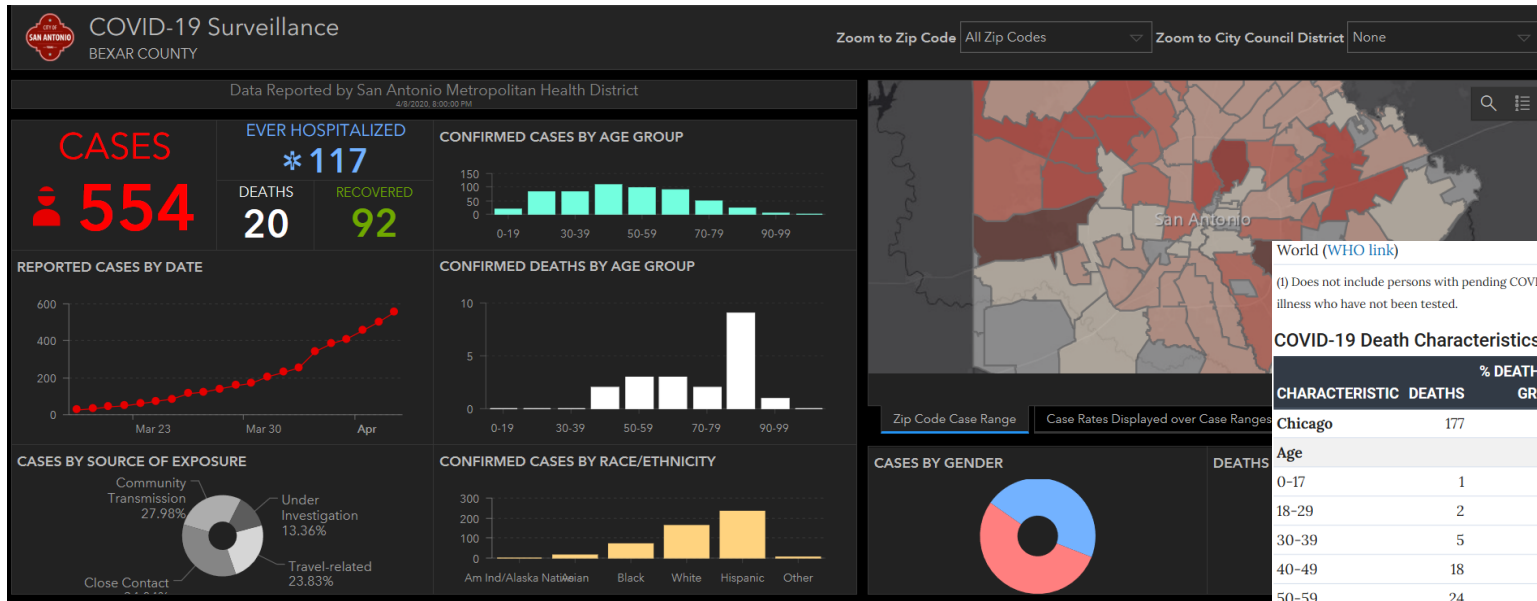
Communities of Color at Higher Risk for Health and Economic Challenges due to COVID-19

Samantha Artiga [@](#), Rachel Garfield [@](#), and Kendal Orgera

Published: Apr 07, 2020



Equity in COVID19 Surveillance Activities



World (WHO link) 1,356,780 79,385

(1) Does not include persons with pending COVID-19 tests or persons with COVID-19 related illness who have not been tested.

COVID-19 Death Characteristics for Chicago residents

CHARACTERISTIC	DEATHS	% DEATHS WITHIN GROUP	RATE PER 100,000 POPULATION
Chicago	177	2.9%	6.5
Age			
0-17	1	1.6%	0.2
18-29	2	0.2%	0.4
30-39	5	0.5%	1.1
40-49	18	1.6%	5.3
50-59	24	2.0%	7.7
60-69	30	3.4%	11.4
70+	97	10.0%	41.2
Gender			
Female	68	2.3%	4.9
Male	109	3.6%	8.3
Unknown	-	-	-
Race-ethnicity			
Latinx	17	2.5%	2.2
Black, non-Latinx	122	5.4%	15.6
White, non-Latinx	22	2.2%	2.4
Latinx			
Asian, non-Latinx	5	3.1%	2.8

18-29	833	13.7%	150.7
30-39	1060	17.4%	232.3
40-49	1113	18.2%	330.8
50-59	1174	19.2%	375.1
60-69	883	14.5%	335.8
70+	968	15.9%	411.4
Unknown	5	0.1%	-

Gender			
Female	2989	49.0%	215.6
Male	3049	50.0%	231.0
Unknown	61	1.0%	-
Race-ethnicity (2)			
Latinx	690	15.5%	88.8
Black, non-Latinx	2276	51.2%	290.2
White, non-Latinx	1019	23.0%	113.2
Asian, non-Latinx	163	3.7%	90.6
Other, non-Latinx	293	6.6%	245.3
Unknown	1658	(27.2%)	-

(2) Race-ethnicity percentage is calculated among those with known race-ethnicity as reported by the medical provider.

Underlying Chronic Conditions among Chicago residents who died from COVID-19

CHARACTERISTIC	NUMBER	% OF KNOWN
Known medical history	163	-
Underlying chronic conditions (3)	154	94.5%

Racism and Xenophobia

PUBLIC HEALTH INSIDER

OFFICIAL INSIGHTS FROM PUBLIC HEALTH - SEATTLE & KING COUNTY STAFF



STOPPING RACISM FUELED BY COVID-19 FEAR

Public Health Insider [Leave a comment](#)

Written by Amy Pak, Julia Yen, Wan-Lin Tsou and Jeanne Rables

Many of us have read and seen the stories of Asian Americans being harassed and berated on the streets, in parks, and on public transit. Unfortunately, our Asian-American community is now a major target in the reawakening of anti-Chinese rhetoric, affecting the elderly and the young.



Misinformation and bias results in anti-Asian racism and violent backlash that creates many implications for our Asian Pacific Islander community's safety, prosperity, and wellness. Our very own Seattle Chinatown - International District's small mom and pop shops—including many that are intergenerational

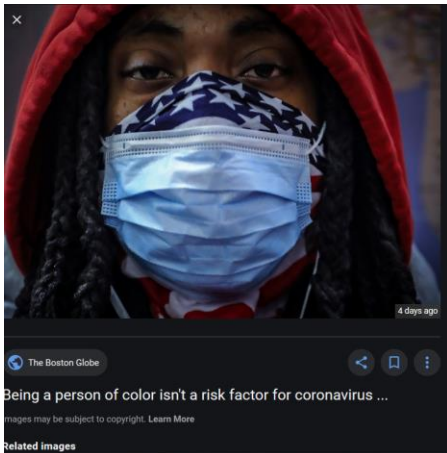
FOLLOW BLOG VIA EMAIL

Enter your email address to follow this blog and receive notifications of new posts by email.

Email Address

FOLLOW

FOLLOW US ON TWITTER



OPINION

Why I don't feel safe wearing a face mask

I'm a Black man living in this world. I want to stay alive, but I also want to stay alive.

By [Aron Thomas](#) Updated April 5, 2020, 1:07 p.m.



A man pauses with his homemade face mask in New York. SPENCER PLATT/GETTY

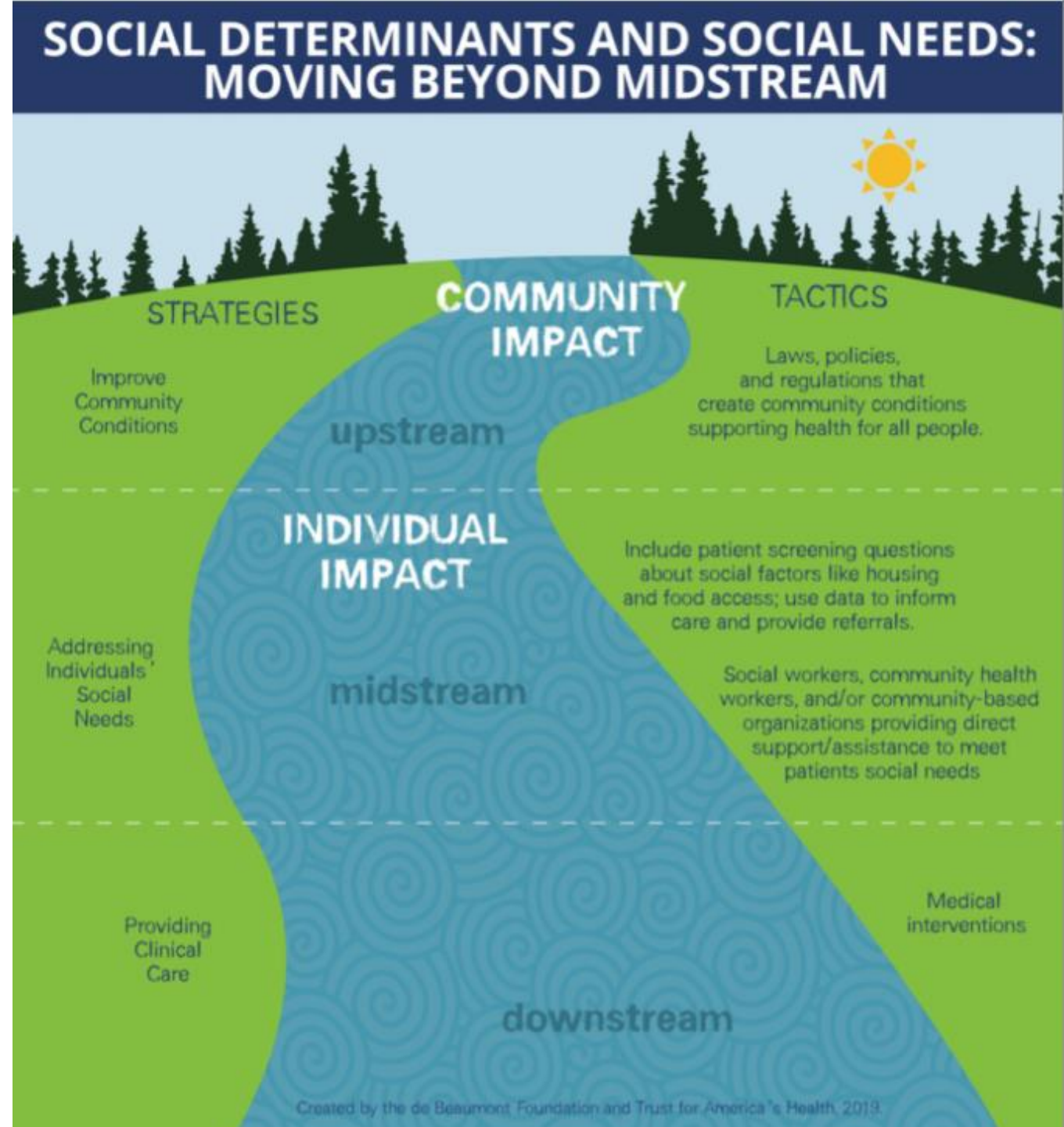


Efforts To Address Social Needs Are Necessary, But Not Sufficient

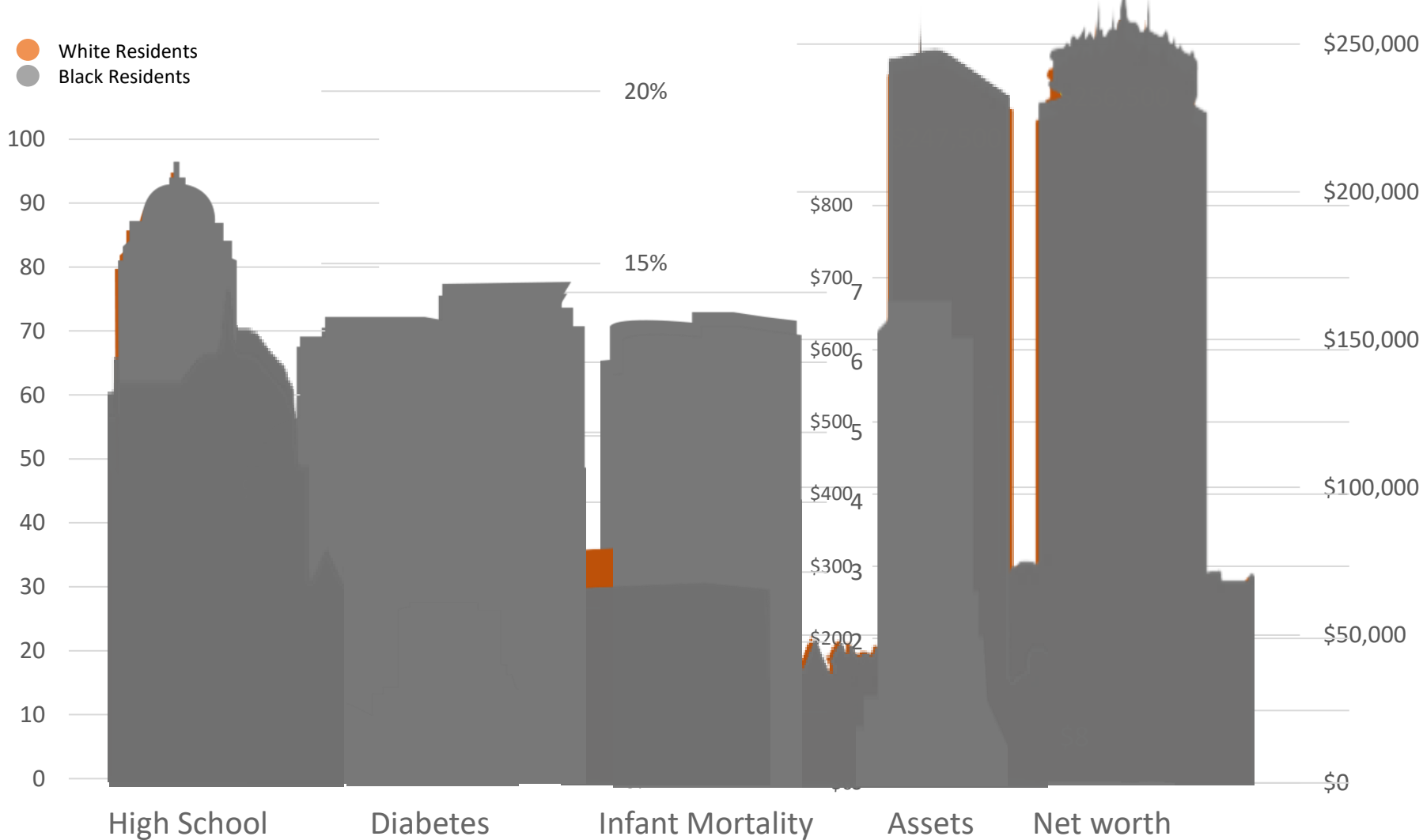
SDoH: conditions in which people are born, grow, live, work, and age.
World Health Organization, 2008,
Commission on SDoH

In the face of COVID, acute social needs:

- Food insecurity
- Homelessness and housing instability
- Lack of economic mobility

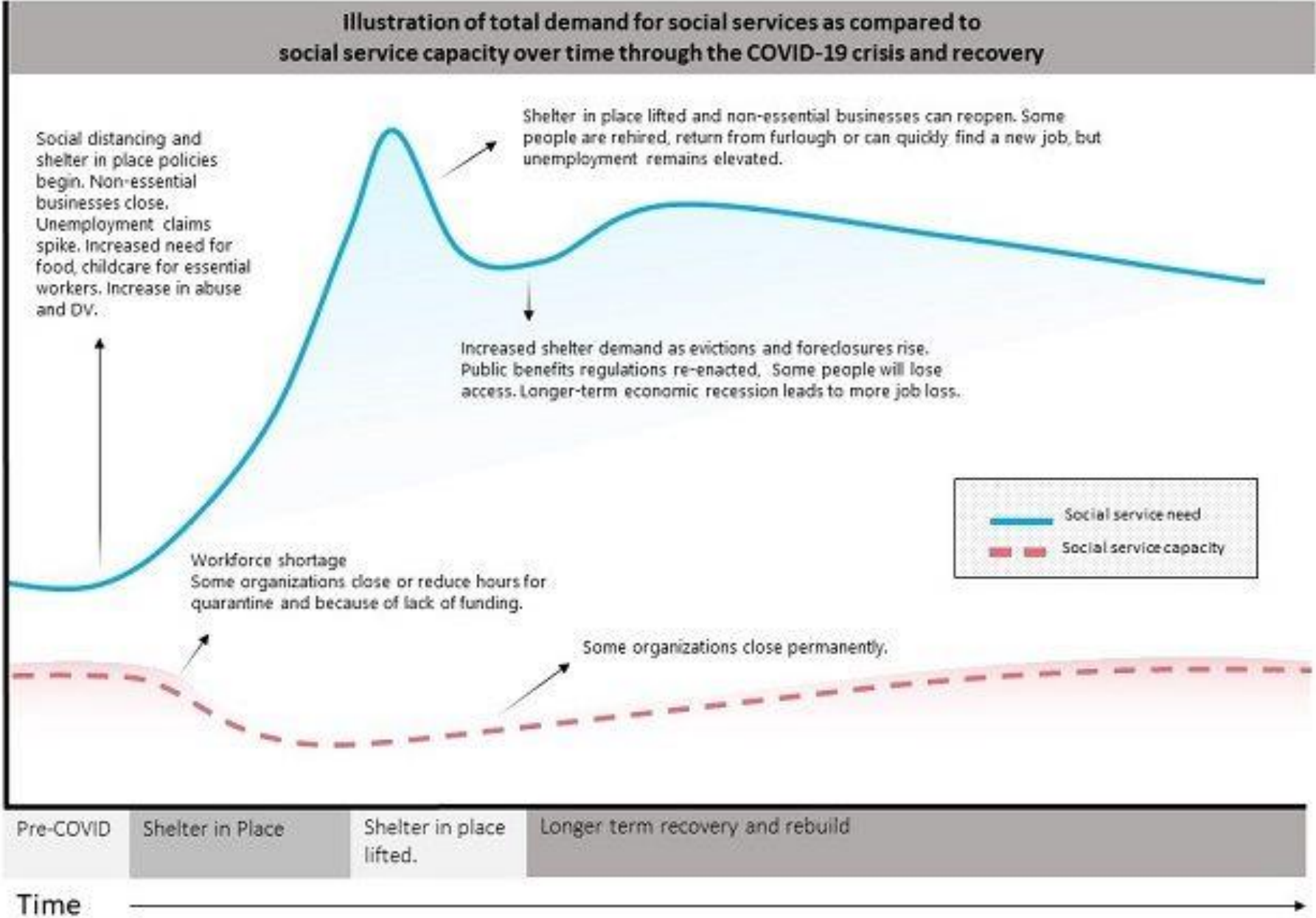


Boston: A Tale of Two Cities



Data Source: Health of Boston Report, 2014-2015 & Wealth of Boston Report, 2015

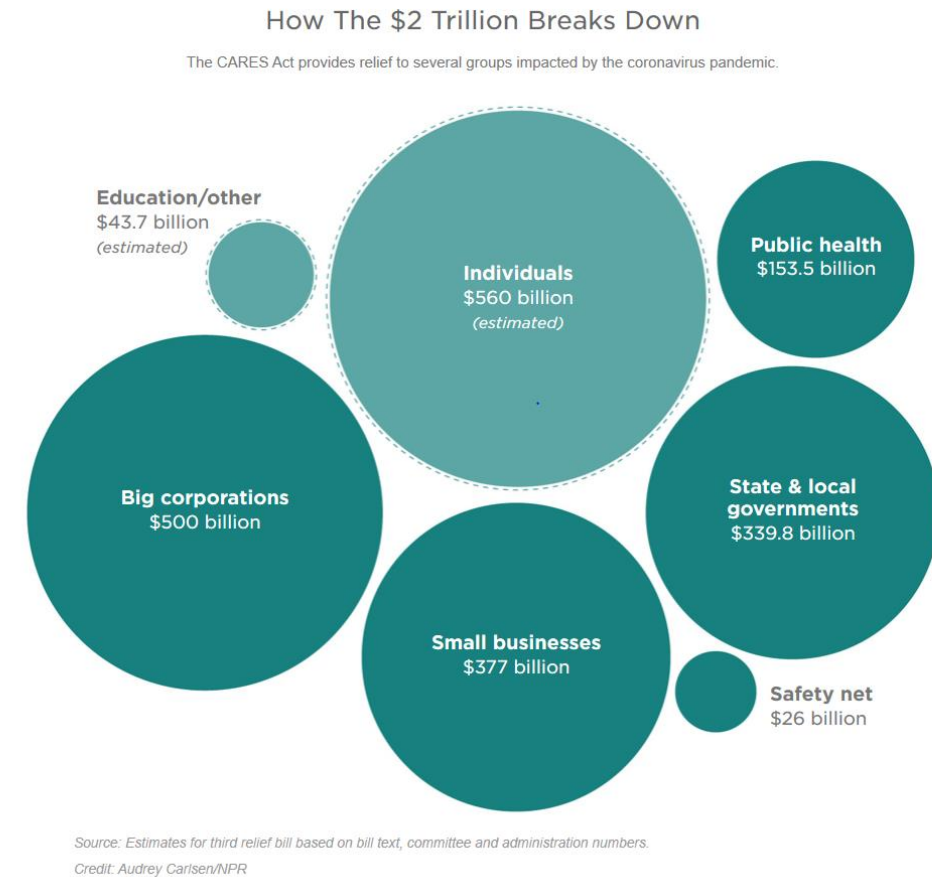
Flattening the Next COVID-19 Curve –Essential Resources



Source: HealthLeads,
<https://healthleadsusa.org/communications-center/blog/flattening-the-next-covid-19-curve/#story>

Local Example

- MPHA Emergency Task Force on Coronavirus & Equity:
 1. Enact a moratorium on evictions and foreclosures: VICTORY!
 2. Ensure that everyone has access to safe quarantine
 3. Ensure that immigrants have safe access to testing and treatment
 4. Pass Emergency Paid Sick Time: 15 additional days + address gaps in Federal CARES Act



Resources

- Public Health Awakened and The Spirit of 1848 COVID-19 Resources
- Incarcerated individuals
 - <https://www.prisonpolicy.org/virus/virusresponse.html>
 - Urban Institute:
<https://urbanorg.app.box.com/s/yqsqcepd1ryvp9ntekls6ims2fmsjnr7>
 - CDC Guidance for Correctional and Detention Facilities
- #whypublichealthmatters

Changing Hearts and Minds: mobilizing for action

→ ↻ 🏠 https://whypublichealthmatters.org/ ☆ ⌵ ⌵ ⌵

#WhyPublicHealthMatters STORIES NEWS & RESOURCES FAQs CONTACT

SHARE YOUR STORY

Got 60 seconds? Tell us what you're doing, seeing, or experiencing — and what people should know about the public health response to COVID-19. Your story can inspire and educate others and build support for public health professionals like you.

Why Public Health Matters

Hi, everybody.

Soledad O'Brien invites you to submit a video.

TIPS FOR RECORDING

- 1 Click "start" for step-by-step instructions and an optional tutorial before you record.
- 2 Record from a quiet, well-lit location.
- 3 If you're using a phone, hold it horizontally.
- 4 Once your video is complete, click "upload."

**OUR
WORLD
OUR
RESPONSE**

CDC Foundation
Together our impact is greater

ALL OF US
COMBAT
CORONAVIRUS

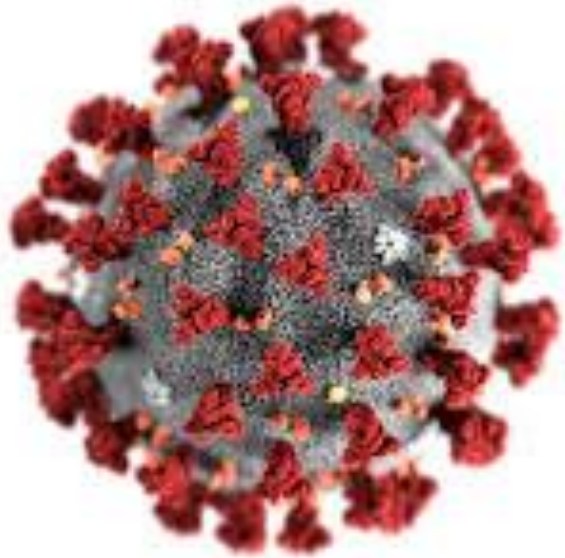
GIVE4CDF.ORG



Thank you!

Monica Valdes Lupi, mvlupi@gmail.com

Equity During a Pandemic



- What needs to be considered in the response and the recovery?
- How can you support activities on the front-lines?